

Division  
 Office  
 Register  
 1922

COUNTY of  
 W. C. Jay Clark  
 to be correct. This instrument was  
 recorded in this office.  
 1922 at 10:55 o'clock A. M.  
 with C. Wilkins, Register of Deeds  
 P. Anne Reed  
 Deputy Register of Deeds

ELMER B. LEWTER  
 D. B. 1823, Pg. 351

T. WILLIAMSON  
 1894, Pg. 188

TRACEY W. DOTSON  
 D. B. 2875, Pg. 01

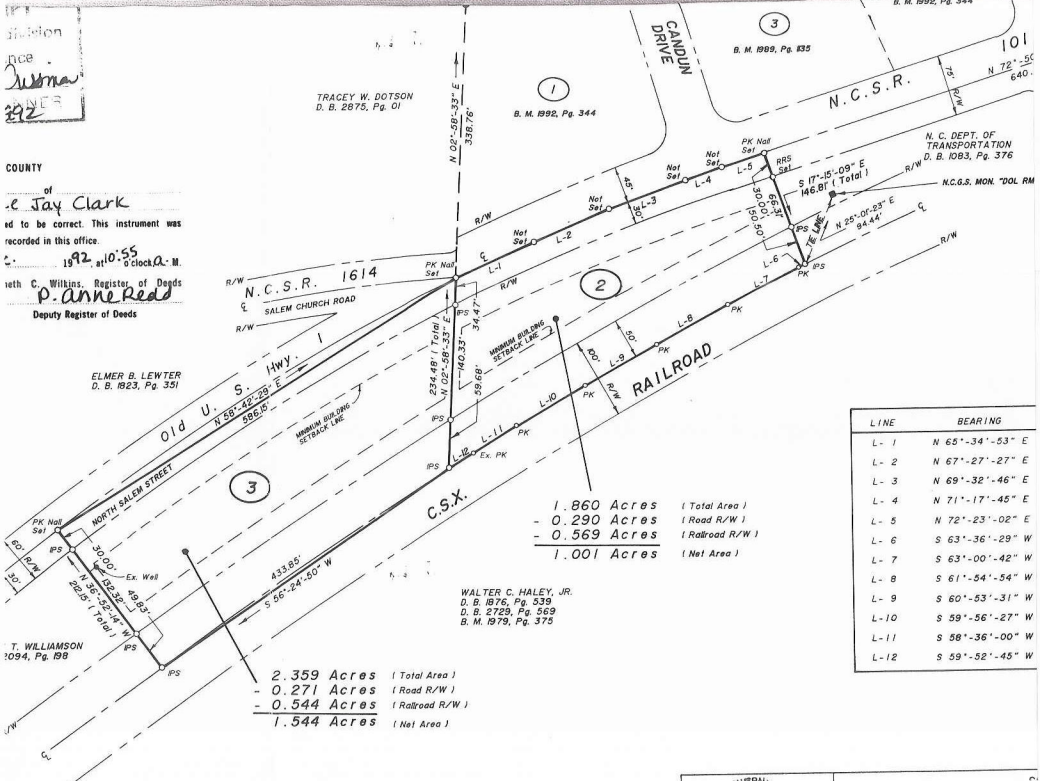
B. M. 1892, Pg. 344

B. M. 1899, Pg. 435

B. M. 1892, Pg. 344

N. C. DEPT. OF  
 TRANSPORTATION  
 D. B. 1893, Pg. 376

N.C.G.S. MON. TOL. RM



1.860 Acres ( Total Area )  
 - 0.290 Acres ( Road R/W )  
 - 0.569 Acres ( Railroad R/W )  
 1.001 Acres ( Net Area )

WALTER C. HALEY, JR.  
 D. B. 1876, Pg. 539  
 D. B. 2729, Pg. 569  
 B. M. 1879, Pg. 375

2.359 Acres ( Total Area )  
 - 0.271 Acres ( Road R/W )  
 - 0.544 Acres ( Railroad R/W )  
 1.544 Acres ( Net Area )

LINE	BEARING
L-1	N 65°-34'-53" E
L-2	N 67°-27'-27" E
L-3	N 69°-32'-46" E
L-4	N 71°-17'-45" E
L-5	N 72°-23'-02" E
L-6	S 63°-36'-29" W
L-7	S 63°-00'-42" W
L-8	S 61°-54'-54" W
L-9	S 60°-53'-31" W
L-10	S 59°-56'-27" W
L-11	S 58°-36'-00" W
L-12	S 59°-52'-45" W